

# AGM

Business Technology Solutions

Tel: 63 2 631.0535

sales@agmincorporated.com  
www.agmincorporated.com

# MTI LOCKS™

Innovative battery powered lock and secure RFID system  
with remote business intelligence capabilities.



# MTI LOCKS™

A STAND-ALONE BATTERY POWERED RFID LOCK DESIGNED FOR CABINETS, CUPBOARDS AND DISPLAY CASES. THIS EASY-TO-INSTALL AND SIMPLE TO USE LOCK IS IDEAL FOR ANY SECURE STORAGE SOLUTION.

## LOW-PROFILE BATTERY POWERED LOCKS

Available in three configurations for a variety of retail fixtures:

- Cabinets
- Drawers
- Sliding glass doors

### Features

- 30K cycles per battery (typical access use case)
- Simple, one-step key card programming
- Easy to install, retail hardened system
- Firmware upgrade path for MTI Connect™ business intelligence
- Kits include lock and battery
  - Programming and User key sold separately

## PRODUCT SPECIFICATIONS

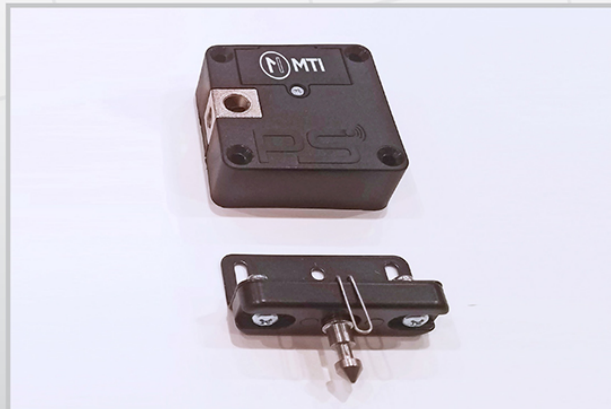
Color:	Black
Lock Dimensions:	2.32" x 2.32" x .87"
RFID:	125Khz
RFID Access:	RFID Key Fob
RFID Range:	30mm
Alarm:	96 db
Operation Temp:	41-95° F
Battery:	CRI23A 3V
Cycles Per Battery:	30000+
Glass Thickness Accommodation:	Thin Glass Door Lock: 3-10mm Thick Glass Door Lock: 10-19mm
Warranty:	2 Years



Low-profile locks fit in fixtures with minimal footprint



RFID Access via key or fob



Door/Drawer Lock Kit



Thin Glass Door Lock Kit

# MTI LOCKS™

## TO ORDER:

Part	Part Number
Door/Drawer Lock Kit	185-00426
Thin Glass Door Lock Kit	185-00427
Thick Glass Door Lock Kit	185-00428

## Replacement Parts

Door/Drawer Lock Body	165-00444
Glass Door Lock Body	165-00445
CR123A 3V Lithium Battery	410-00003
Door/Drawer Latch	165-00383
Thin Glass Door Latch (3-10mm)	575-00530
Thick Glass Door Latch (10-19mm)	575-00532
Lock Key Starter Set	165-00459
User Key FOB Bulk Pack (5)	165-00460